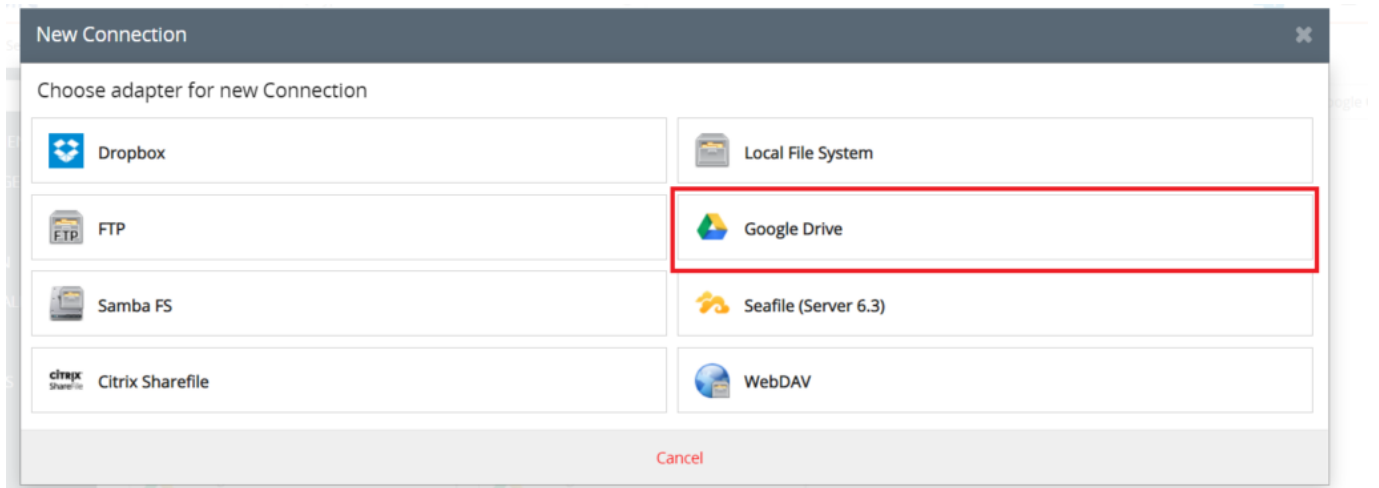




CloudFile

5.Create Google Drive connection in CloudFile

Go to Connections -> Create new Connection. Here Select '**Google Drive**':



Copy that link:

Add this url to redirect-urls

<https://test-vtiger.demo-10.redoo.cloud/modules/CloudFile/google-callback.php>

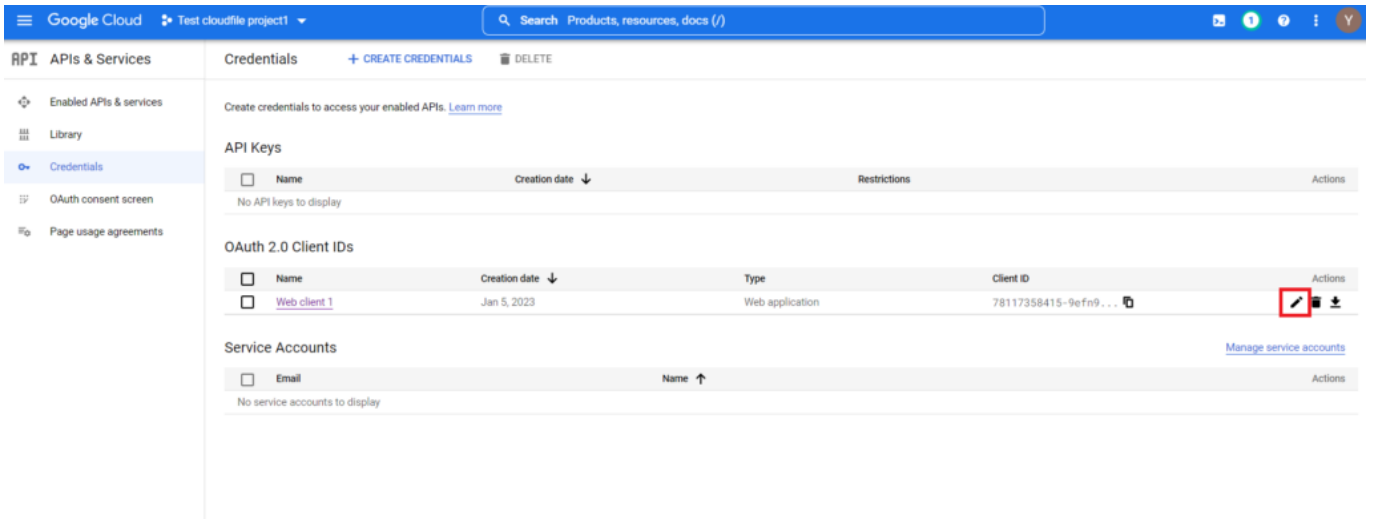
Then

Because of Login Restrictions, you need to do the Login and Authorization within the Link and copy the Code you get in this Textfield.

[Link](#)

Submit the Code & Unlock Google Drive Access

Then go to Google Cloud -> Credentials, and press edit (pencil):



Paste copied URL to Authorized redirect URIs:

Save, and wait

The screenshot shows the Google Cloud console interface for a 'Client ID for Web application'. The left sidebar lists 'APIs & Services' with sub-items: 'Enabled APIs & services', 'Library', 'Credentials' (selected), 'OAuth consent screen', and 'Page usage agreements'. The main content area has a breadcrumb 'Client ID for Web application' and buttons for 'DOWNLOAD JSON', 'RESET SECRET', and a trash icon. An information box states: 'The domains of the URIs you add below will be automatically added to your OAuth consent screen as authorized domains.' Below this are two sections: 'Authorized JavaScript origins' (for browser requests) with an '+ ADD URI' button, and 'Authorized redirect URIs' (for web server requests) with a '+ ADD URI' button. A red box highlights the text 'URIs 2 *' and the URI 'https://test-vtiger.demo-10.redoo.cloud/modules/CloudFile/google-callback.' in the 'Authorized redirect URIs' section. At the bottom, there are 'SAVE' and 'CANCEL' buttons and a note: 'Note: It may take 5 minutes to a few hours for settings to take effect'.

for a few minutes before continuing. After, press the link:

Add this url to redirect-urls


<https://test-vtiger.demo-10.redoo.cloud/index.php?module=CloudFile&parent=Settings&action=ConnectionCheck>

Then


Because of Login Restrictions, you need to do the Login and Authorization within the Link and copy the Code you get in this Textfield.


[Link](#)

Select the needed account, and agree with all.

 Sign in with Google

Choose an account
to continue to redoo.cloud

 **Yurii Hrytsak**
yurii.hrytsak.redoo@gmail.com

 Use another account


Before using this app, you can review [redoo.cloud's privacy policy](#) and [terms of service](#).

English (United States) ▼

[Help](#)

[Privacy](#)

[Terms](#)



Google hasn't verified this app

You've been given access to an app that's currently being tested. You should only continue if you know **the developer** that invited you.

Continue


Back to safety

English (United States) ▼


[Help](#)

[Privacy](#)


[Terms](#)

 Sign in with Google

redoo.cloud wants access to your Google Account

 yurii.hrytsak.redoo@gmail.com

When you allow this access, **redoo.cloud** will be able to

 See, edit, create, and delete all of your Google Drive files. [Learn more](#)

Make sure you trust redoo.cloud

You may be sharing sensitive info with this site or app. You can always see or remove access in your [Google Account](#).

Learn how Google helps you [share data safely](#).

See redoo.cloud's [Privacy Policy](#) and [Terms of Service](#).

After, type the connection label, document root, and save:

Settings

Adapter	Google Drive
Active	Active
Connection title	Title25
Where is able to Unlink?	If empty, all User are allowed to unlink.
Root Folder	/CS9 /files
Default view mode	View as grid
Unlink the Cloud Connection	Unlink the Cloud Connection
	Do not delete any configuration.
	Delete this connection

Wait a few minutes +/-

Continue configuration

